



**altice**  
FORUM  
braga



**BUSINESS  
CULTURE  
EXPERIENCES**



**INVEST  
Braga**



**BRAGA**  
Município





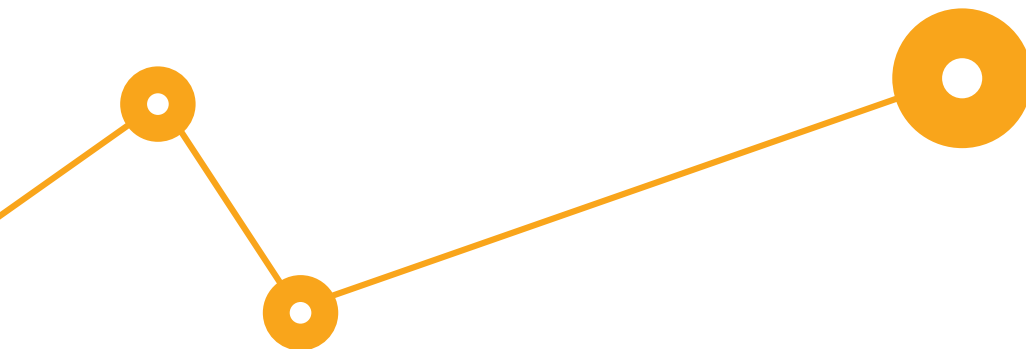
# Altice Forum Braga

Inspired by its Roman heritage, is the new venue in the northern region, with unique conditions and excellence for congresses, shows, fairs and all sorts of events.

Thought and made for people, Altice Forum Braga is the meeting point for business, culture providing multi-valencies for all kinds of experiences.



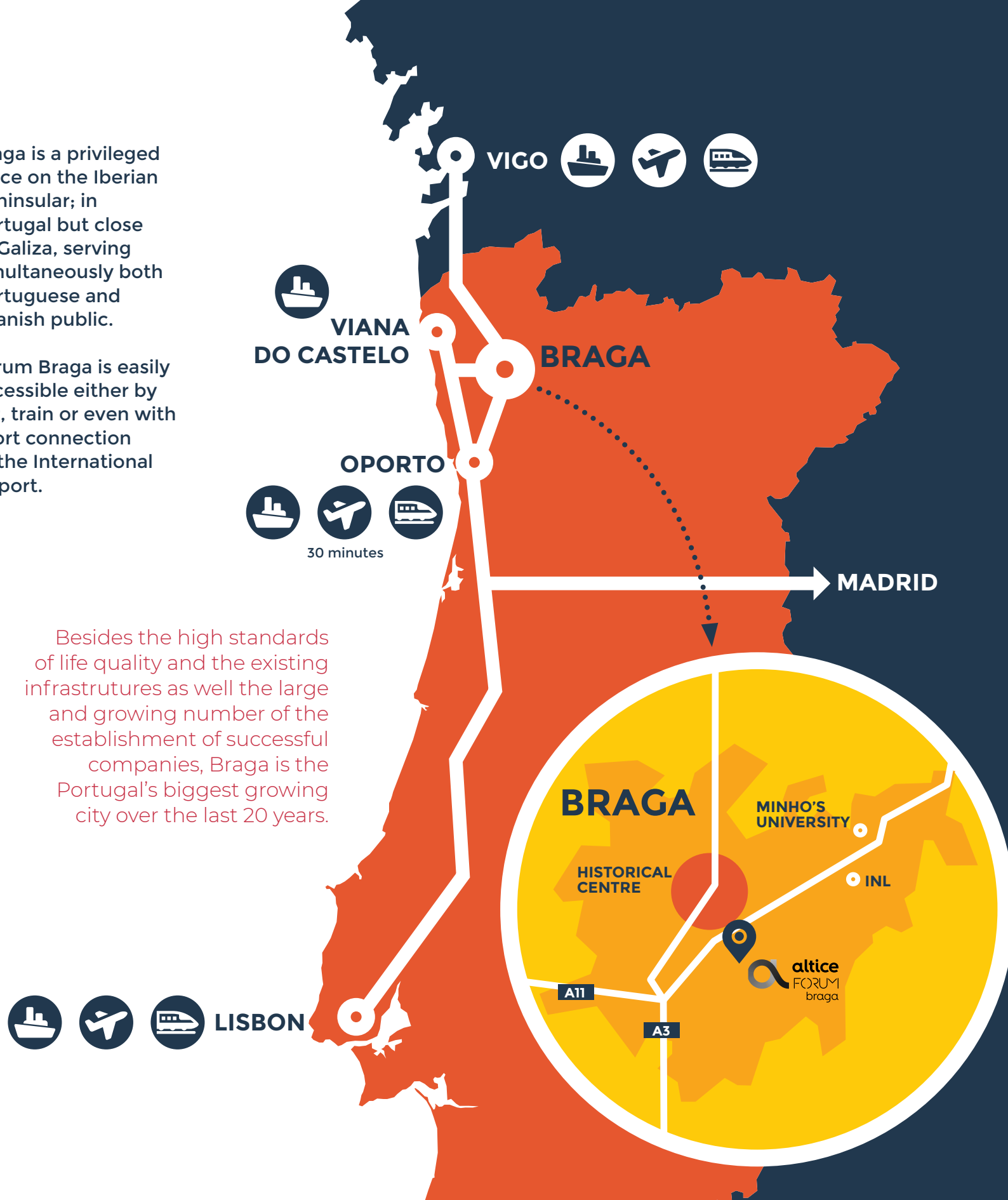
Strategic  
Geographical  
Location  
**BRAGA**



Braga is a privileged place on the Iberian Peninsular; in Portugal but close to Galiza, serving simultaneously both Portuguese and Spanish public.

Forum Braga is easily accessible either by car, train or even with short connection to the International Airport.

Besides the high standards of life quality and the existing infrastructures as well the large and growing number of the establishment of successful companies, Braga is the Portugal's biggest growing city over the last 20 years.



# BRAGA

Accommodation

**BRAGA**  
**3.250**  
beds

	UNITS	ROOMS	CAPACITY
5***** Hotels	1	182	364
4 **** Hotels	8	471	938
3 *** Hotels	8	462	941
<b>Total</b>	<b>17</b>	<b>1115</b>	<b>2243</b>

**Local Accomodation**  
**1.150** beds

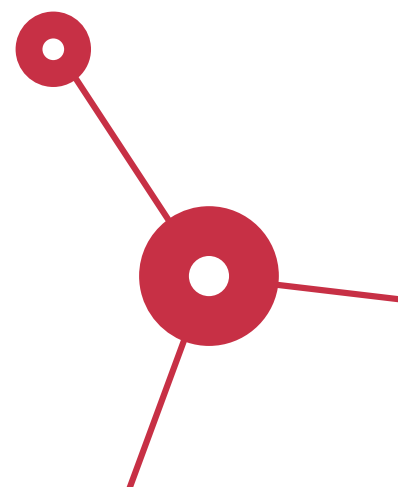






**WITHIN  
25 KMS**

**6.164**  
beds



**WITHIN  
50 KMS**

Over  
**11.000**  
beds  
in 4 and 5 star hotels

in 4 and 5 star hotels



**Versatile and adapted  
to the forthcoming  
requirements**



**altice**  
FORUM  
braga

**CONCERTS**  
**CONGRESS**  
**SPORT**  
**SHOWS**  
**EXHIBITIONS**  
**FAIRS**  
**LARGE SCALE EVENTS**





- Able to host events from 20 to 20 thousand people

- Reliable

- Comfortable



- Modern
- Technological and interactive
- Engaging
- Multi-purposed
- Technical and logistics infrastructures improved

- Energetically sustainable and efficient







## OTHER SPACES:

- Restaurant
- Self-service
- Cafeteria
- Bars
- Shops

- Digital signage network
- Wi-fi coverage
- Parking (up to 620 places)







altice  
FORUM  
braga

Spaces  
and Capacities





## CONGRESS CENTER

- Largest auditorium in the northern of Portugal (1450 seats)
- Small auditorium (250 seats)
- Modular congress rooms
- Meeting rooms
- Bars and reception areas
- Restaurant
- Forum Art Braga

## PAVILION

- Second largest hall
- Shows, congresses, fairs and events
- Up to 12.000 people
- Load suspension for equipments (120 tons)
- Upper gallery with retractable bench
- Bars, dressing rooms and meeting rooms
- Air conditioning with acoustic treatment

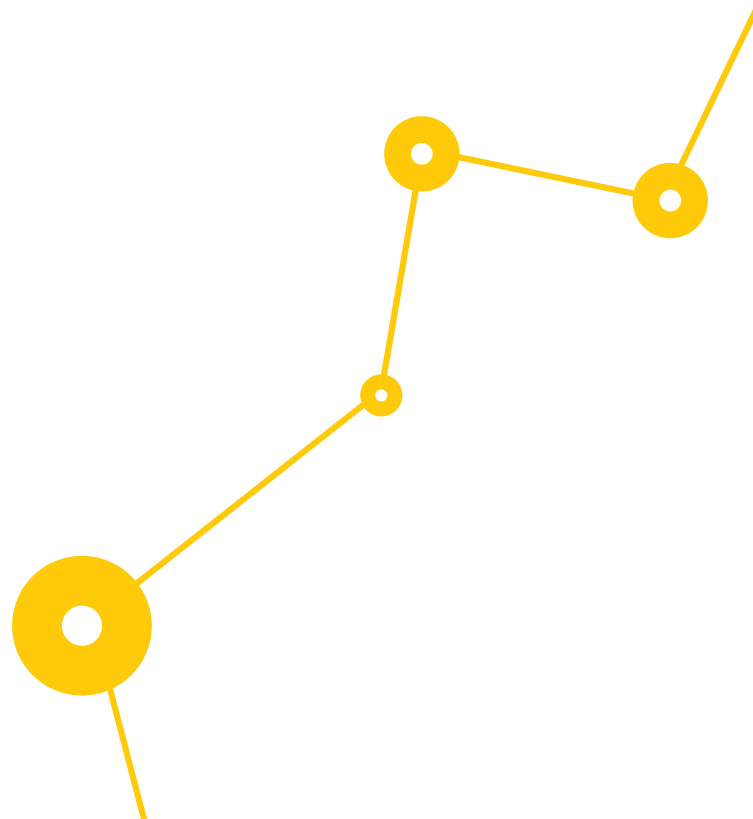
## OUTDOOR SPACE

- Area for concerts with capacity for more than 20 thousand people
- Parking (620)
- Space for more than 300 stands
- Green spaces and leisure areas

**Portugal's  
northern largest  
auditorium**

**Second  
largest hall**

Altice Forum Braga  
has three different  
but integrated and  
versatile areas.







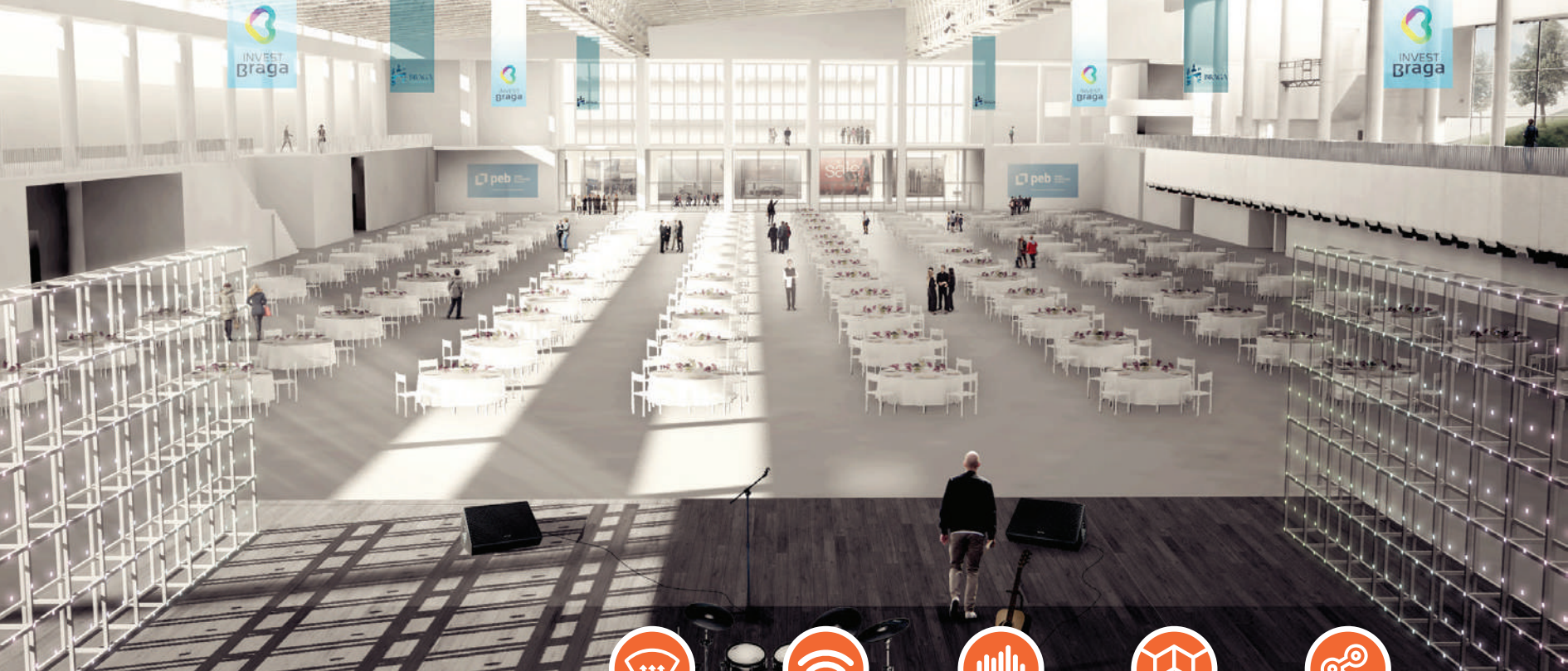
## OUTDOOR SPACE

AREA (Sqm)	BOOTHS (5 X 5)	UP TO 20.000 PEOPLE	PARKING
26000	316	+20000	620



Conditional  
Mobility  
16 Parking Spaces





Air Conditioning



Wi-fi



Acoustic  
Advanced



Load  
Capacity



Interactive

## PAVILION

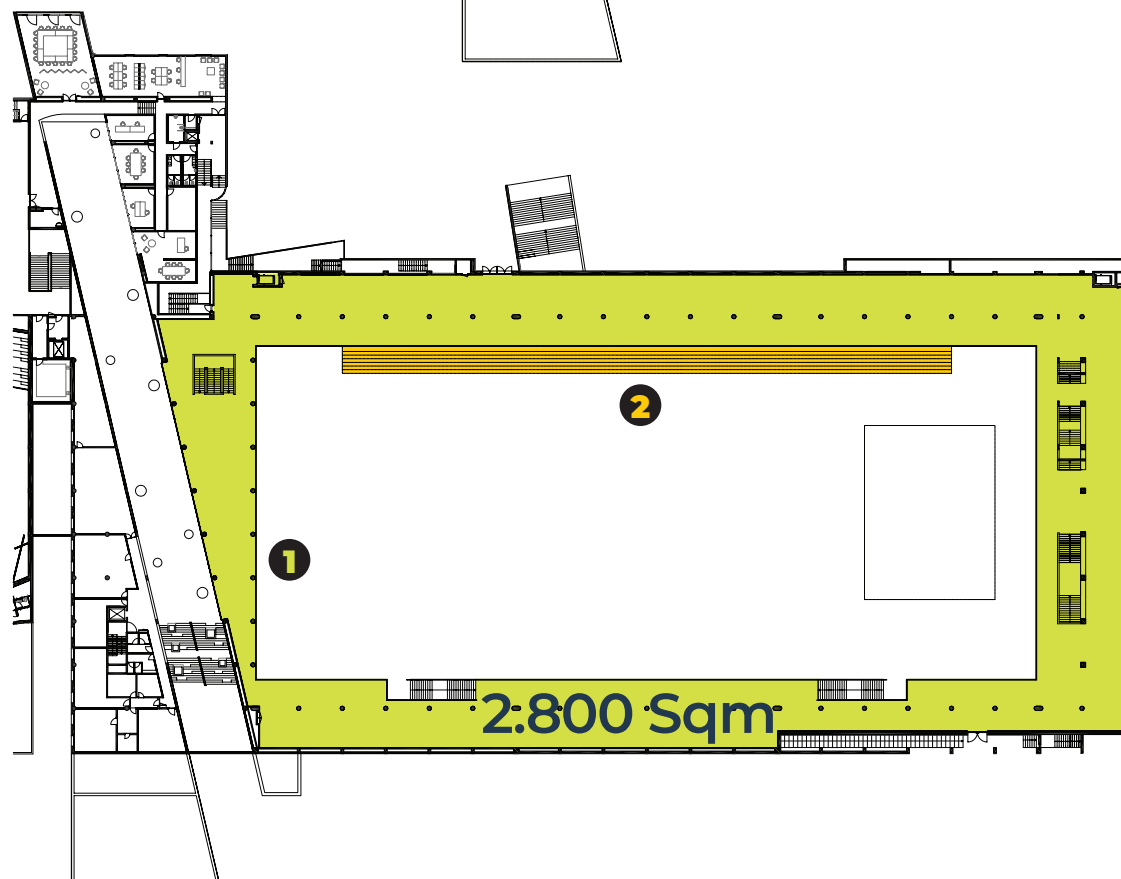
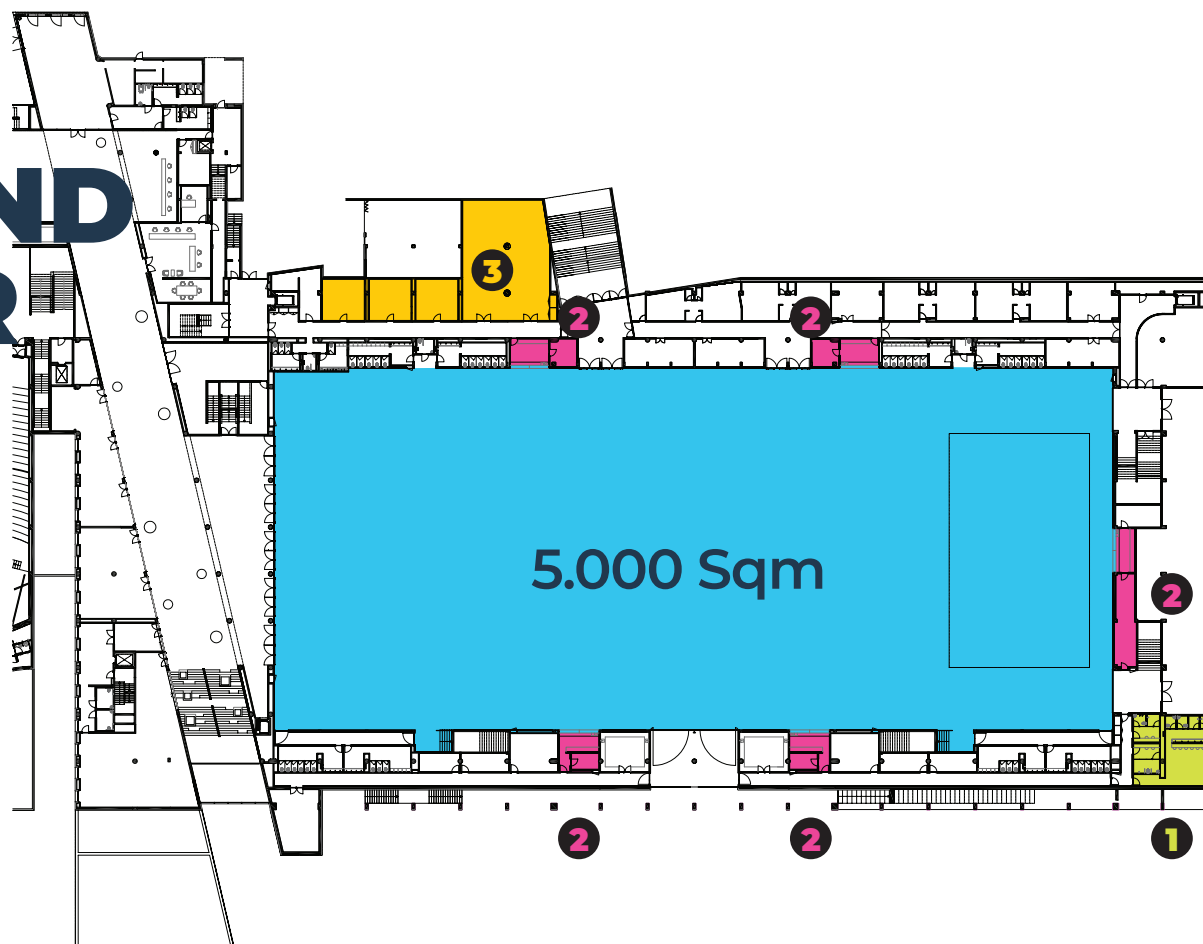
TYPE	AREA (Sqm)	THEATRE	SCHOOL	BANQUET	LOAD CAPACITY	PLACES	SEATS
<b>SHOWS</b>					120 tons*		
GROUND FLOOR	5000					12000	
1 <sup>ST</sup> FLOOR	2800					1300	
Retractable Bench							1680
<hr/>							
<b>EXHIBITIONS/ FAIRS</b>							
GROUND FLOOR	5000						
1 <sup>ST</sup> FLOOR	2800						
GROUND FLOOR + 1	7800						
<hr/>							
<b>CONGRESSES</b>							
TOTAL	5000	4350	3300	3300			
1/2	2500	2160	1610	1610			

\* 40 tons per truss

PAVILION

# GROUND FLOOR

- 1. DRESSING ROOMS
- 2. BAR
- 3. SUPPORT ROOM



PAVILION

# 1<sup>ST</sup> FLOOR

- 1. GALLERY
- 2. RETRACTABLE BENCH





Acclimatization



Wi-fi



Projection



Sound



Interactive




Conditional  
Mobility



Modularity

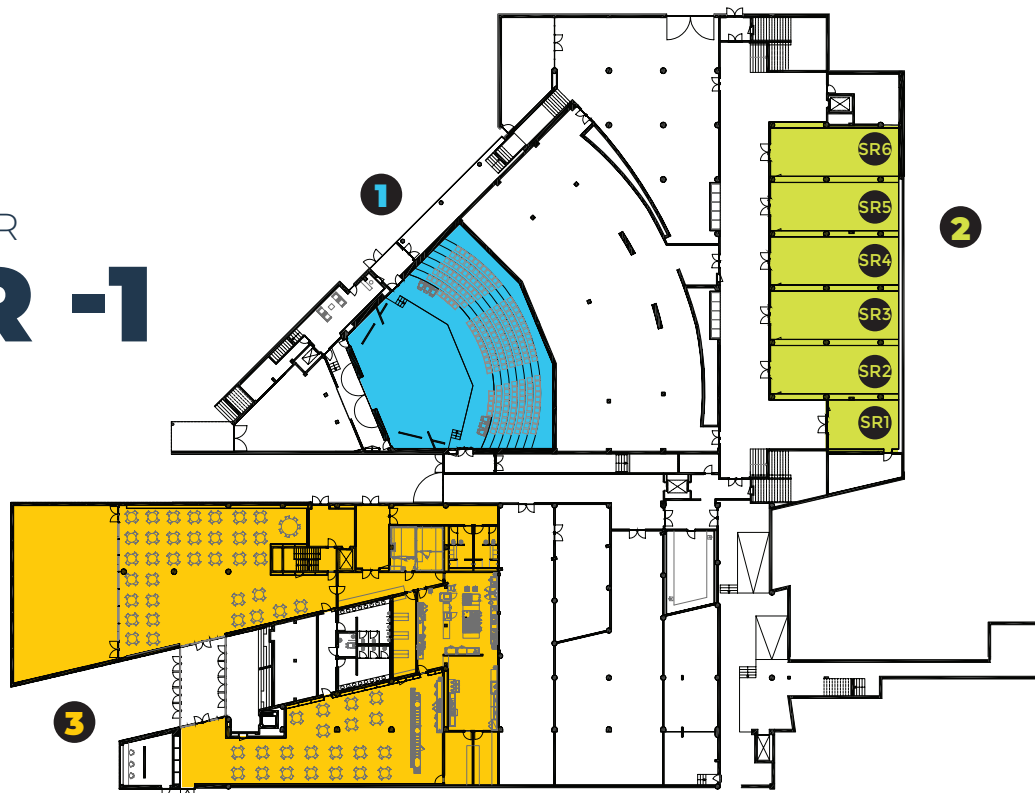
# CONGRESS CENTER

TYPE	THEATRE		
<b>MAIN AUDITORIUM*</b>			
Audience + Balcony	1454		18
Audience	1035		18
1 <sup>st</sup> Audience	354		6
<hr/>			
<b>SMALL AUDITORIUM</b>	254		4

DESIGNATION	AREA (Sqm)	THEATRE	SCHOOL	BANQUET	COCKTAIL/ RECEPTION	U-SHAPE
<b>CONGRESS ROOMS</b>						
S1 + S2 + S3 + S4 + S5	450	400	340	340	680	90
S3	150	120	80	80	225	50
S6	100	80	60	60	160	30
S1	75	60	40	40	120	20
<b>MEETING ROOMS</b>						
SR1	45	35	26	26	70	18
SR2 / SR6	75	60	45	45	120	30
<b>FORUM ART BRAGA</b>						
	300					

## CONGRESS CENTER FLOOR -1

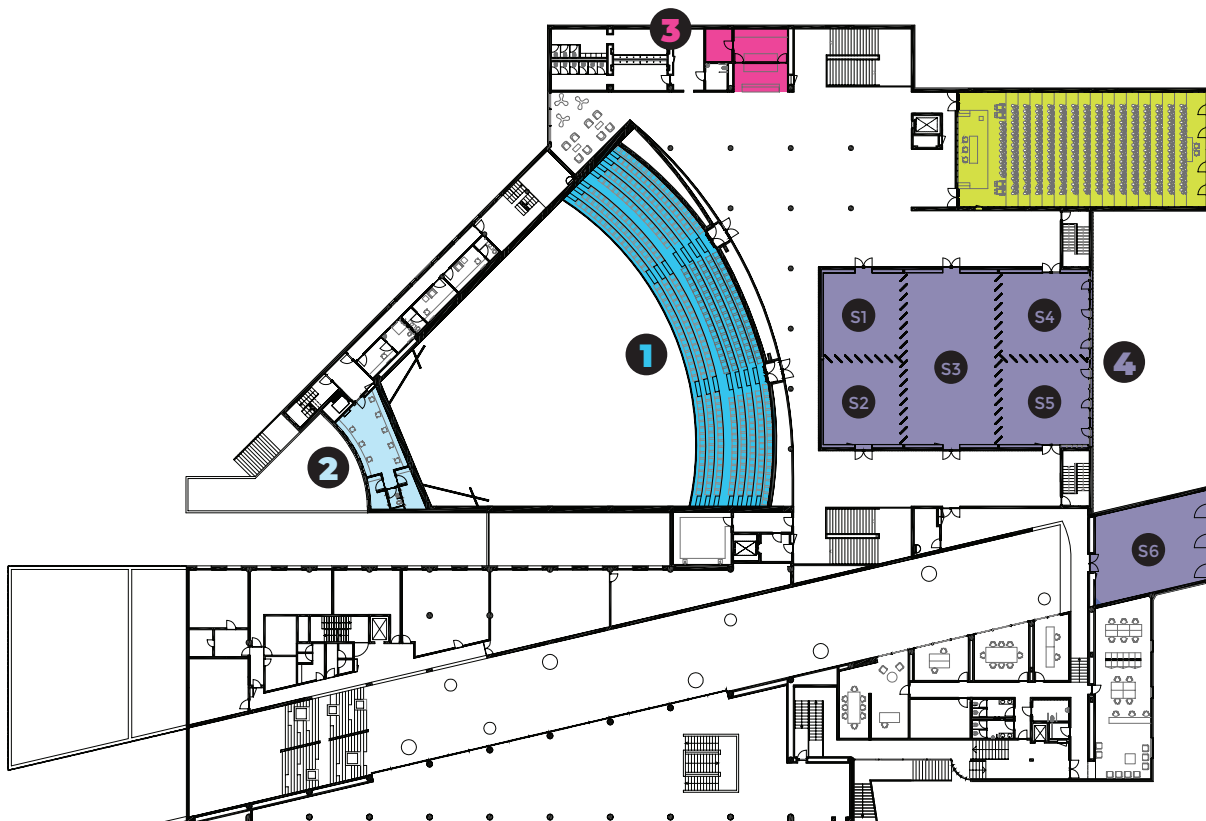
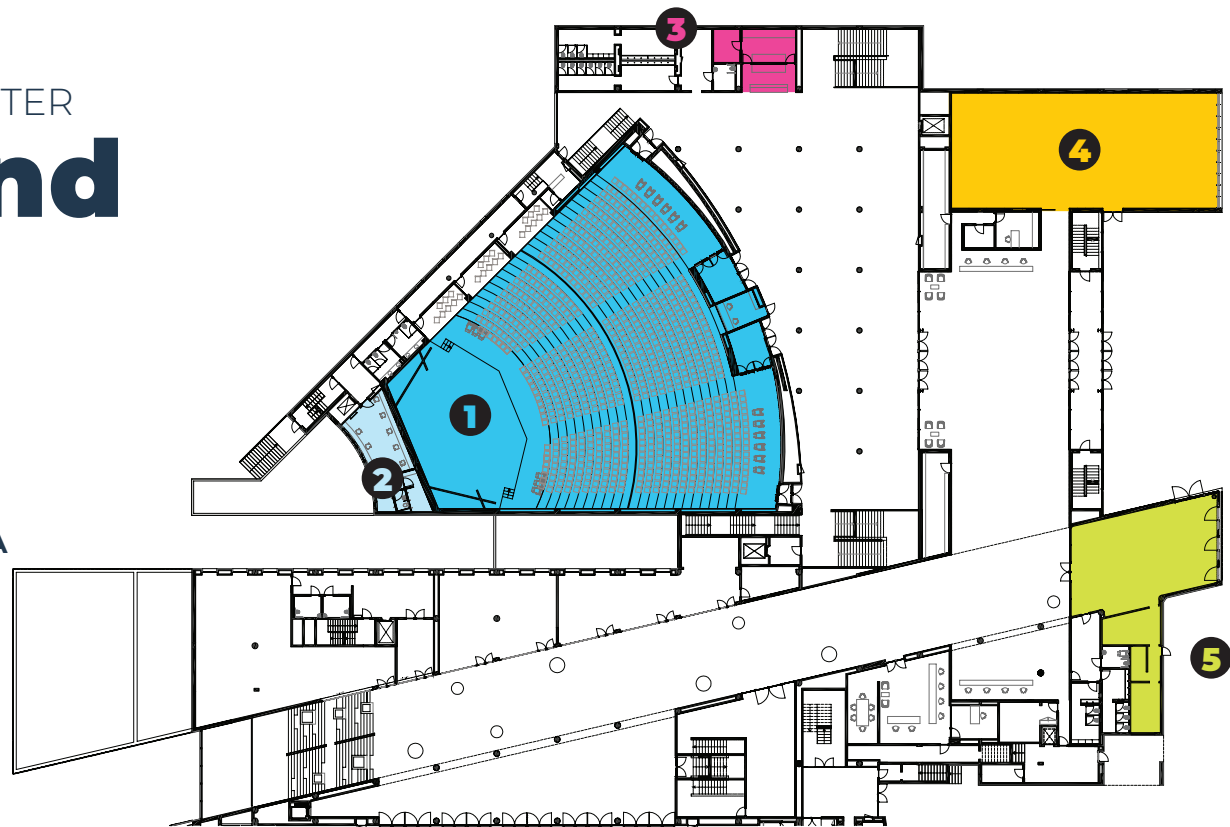
1. MAIN AUDITORIUM
2. MEETING ROOMS
3. RESTAURANT



CONGRESS CENTER

# Ground Floor

1. MAIN AUDITORIUM
2. DRESSING ROOMS
3. BAR
4. FORUM ART BRAGA
5. CAFETERIA



CONGRESS CENTER

# 1<sup>ST</sup> FLOOR

1. MAIN AUDITORIUM
2. DRESSING ROOMS
3. BAR
4. CONGRESS ROOMS
5. SMALL AUDITORIUM





# altice FORUM braga



Av. Dr. Francisco Pires Gonçalves - Apartado 60 - 4711-909 Braga - Portugal  
T.: (+351) 253 208 230 • F.: (+351) 253 264 672 • E.: [comercial@investbraga.com](mailto:comercial@investbraga.com)

[www.forumbraga.com](http://www.forumbraga.com)

